



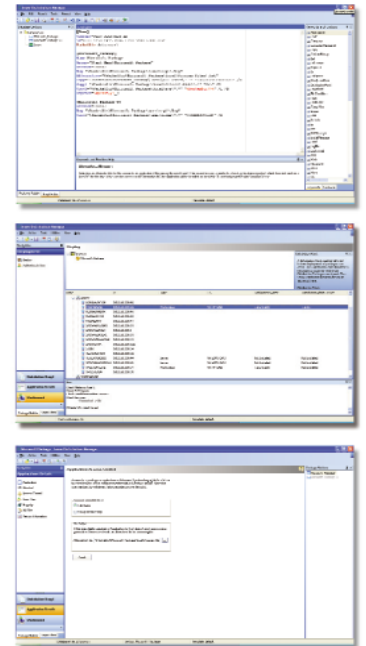
SNOW | DISTRIBUTION™

Snow Distribution is a highly flexible and powerful software distribution and application management tool. It automatically distributes all types of applications, updates and changes to your computers.

Snow Distribution offers efficient software distribution to all users and computers in your network, the main objective being to make all users independent of machine and location.

With a minimum of workload on both network and workstations, Snow Distribution easily and efficiently deploys all types of application packages on any network operating system.

If you need help with your distribution – Snow Software offers distribution packaging to a fixed price!



Benefits

Just in time conditioning

With Snow Distribution's unique "Just in time conditioning" and dependencies features you will be sure to keep your application environment running in top shape 24 hours a day.

Numerous packaging possibilities

Easily create and manage dependency chains and conditions for packages to adjust to any conditions.

Install and run without permissions

Snow Distribution gives you full installation possibility even in a locked down client environment or when the users are local admins. It also enables your applications to run regardless of user's permissions.

Low infrastructure requirements

Snow Distribution has extremely low system requirements on your infrastructure. All you need is File share.

Scalable

Because of the low system requirements and easy implementation, Snow can easily handle both small and large networks. Our product are managing networks with 50 up to 25 000 users.

One system for all environments

With Snow Distributions unique capability to adapt to different conditions, you will easily manage stationary computers, laptops and Terminal Server clients from the same system. This can be done because Snow Distribution uses the same function and packages for thin clients as well as regular clients.